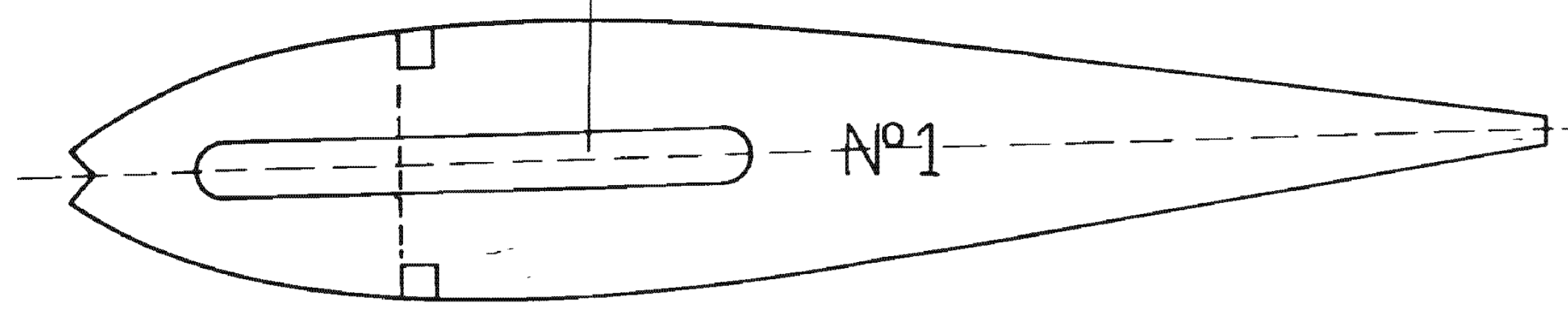
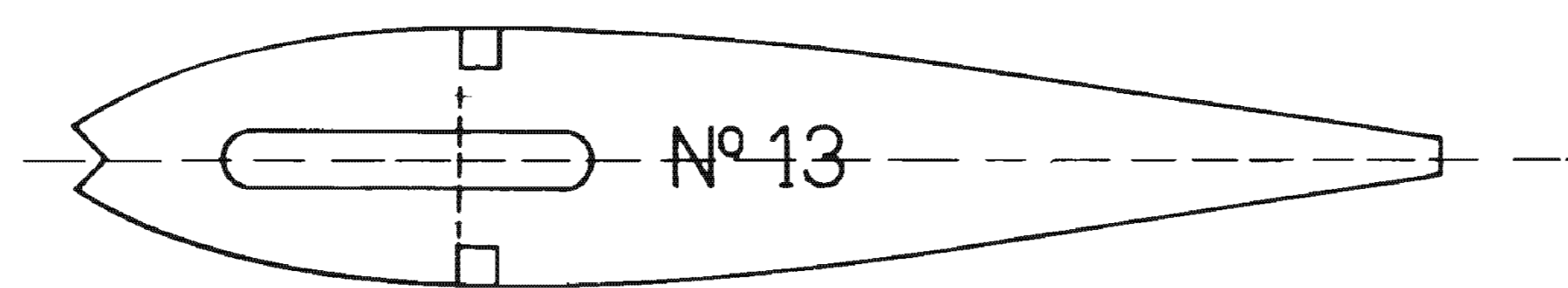
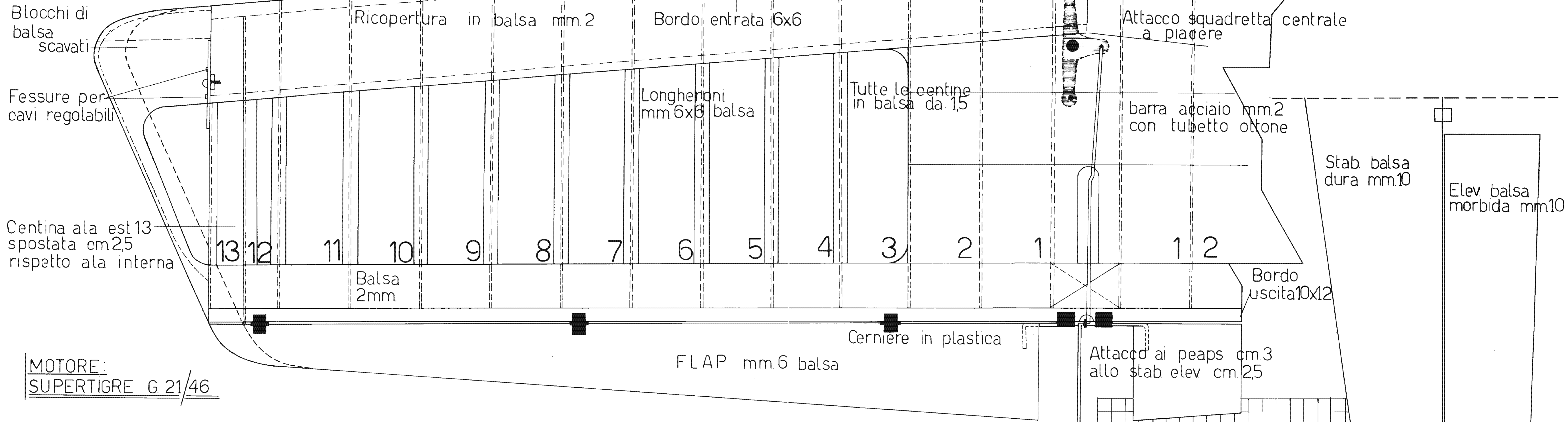


Fessure solo per centine
ala interna per pass cavi



Ricavare le altre centine in base alla 1e13



Blocchi di balsa scavati
Fessure per cavi regolabili
Centina ala est 13 spostata cm 25 rispetto ala interna

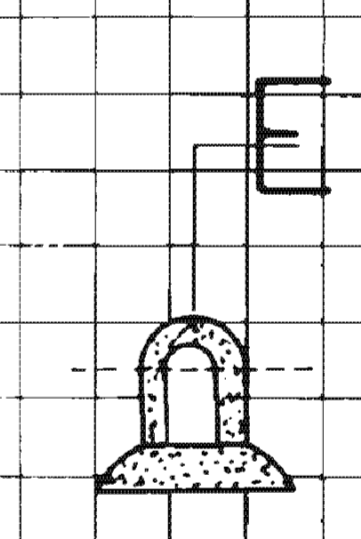
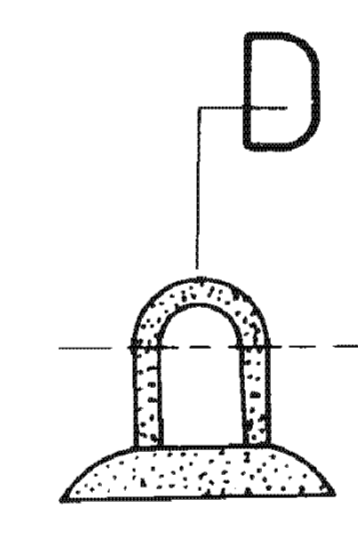
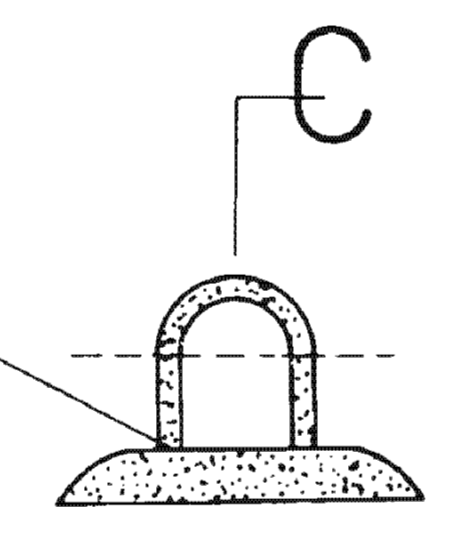
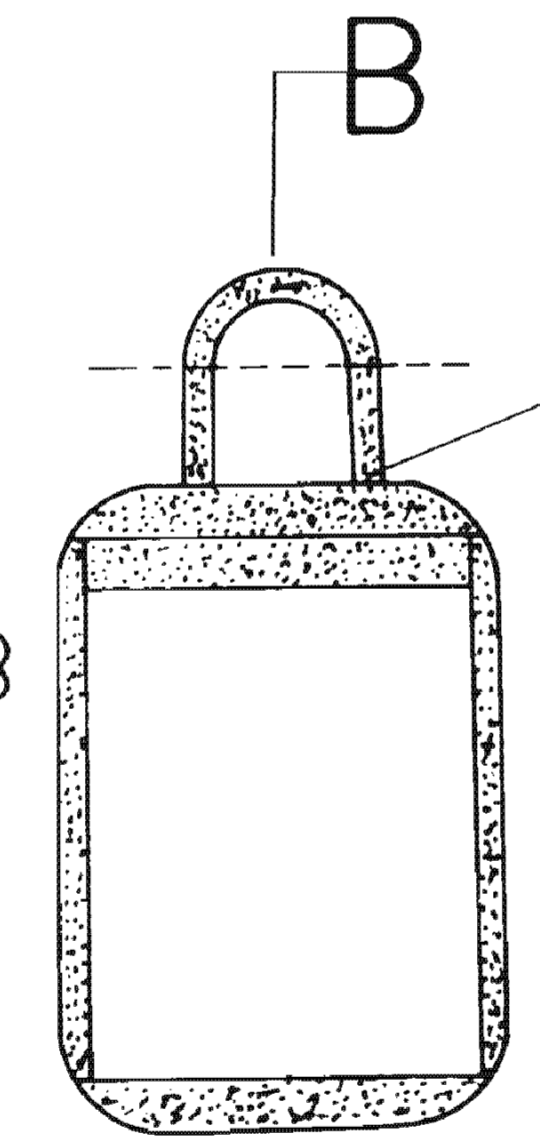
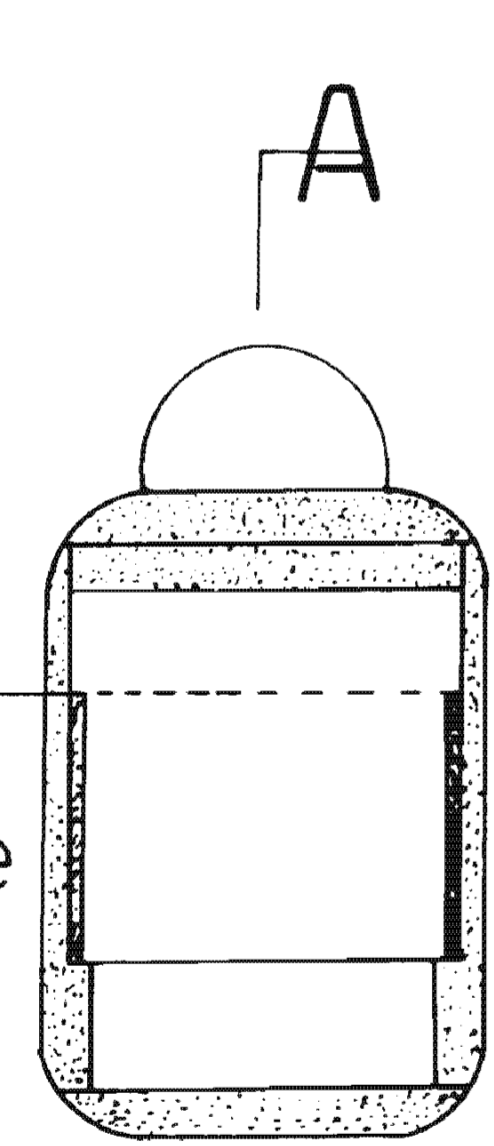
Ricopertura in balsa mm.2
Bordo entrata 6x6
Longheroni mm.6x6 balsa
Tutte le centine in balsa da 15

Attacco squadretta centrale a piacere
barra acciaio mm.2 con tubetto ottone
Stab balsa dura mm.10
Elev balsa morbida mm.10

MOTORE:
SUPERTIGRE G.21/46

FLAP mm.6 balsa

Attacco ai peaps cm.3 allo stab elev cm.25



Ordinate A e B ritagliate secondo motore e longherine desiderate

Ordinate A e B comp 3

Fiancate lat. sup. 6 sagom. in opera

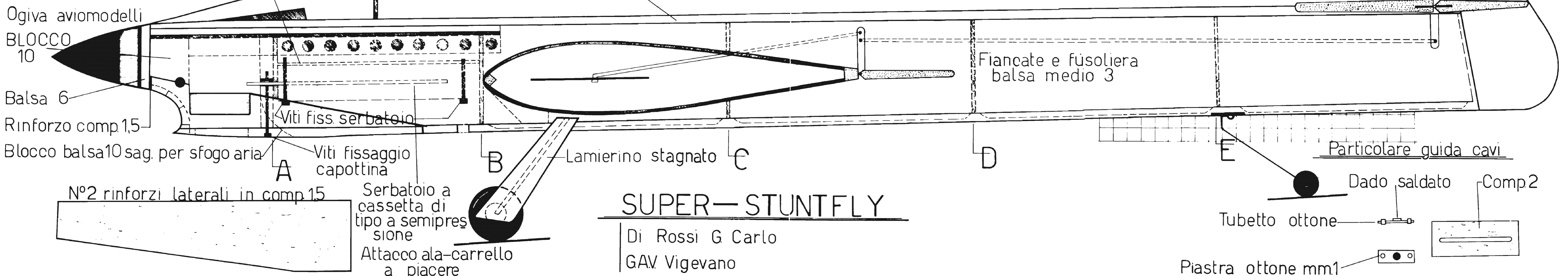
Ordinate C, D, E in balsa 3

Balsa da 5+comp mm.2

Balsa 6

quadratura 1 cm di lato

Direzionale balsa medio 10



Ogiva aviomodelli
BLOCCO 10
Balsa 6
Rinforzo comp.15
Blocco balsa 10 sag. per sfogo aria

Viti fiss. serbatoio
Viti fissaggio capottina

Lamierino stagnato

Fiancate e fusoliera balsa medio 3

Particolare guida cavi

N°2 rinforzi laterali in comp.15

Serbatoio a cassetta di tipo a semipresione
Attacco ala-carrello a piacere

SUPER-STUNTFLY
Di Rossi G. Carlo
GAV Vigevano

Dado saldato Comp.2
Tubetto ottone
Piastra ottone mm.1