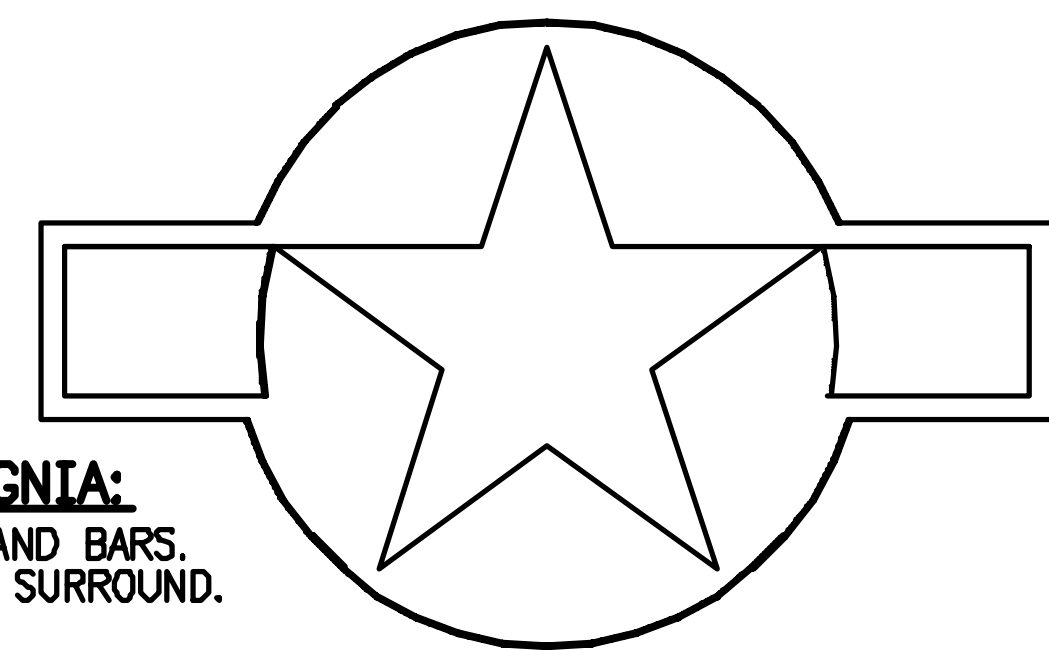


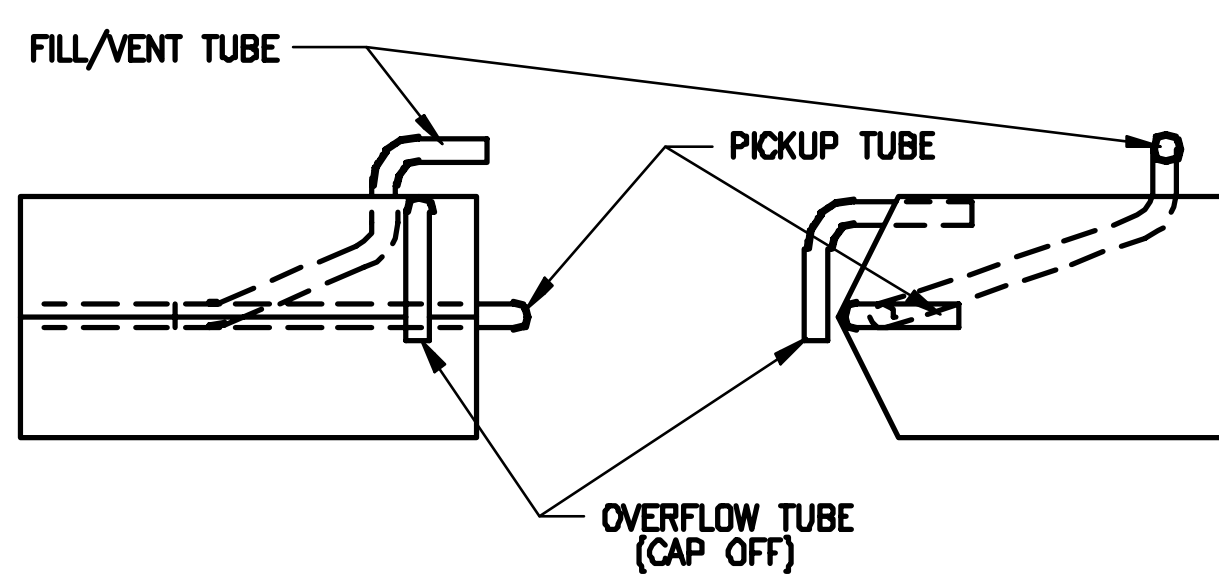
**WARNING— DANGER!**

DO NOT FLY NEAR POWER LINES!  
INSTANT DEATH CAN RESULT FROM  
CONTACT WITH, OR PROXIMITY TO  
ELECTRIC POWER LINES.

**WING INSIGNIA:**  
WHITE STARS AND BARS.  
INSIGNIA BLUE SURROUND.



**3 OZ. UNIFLOW TANK DETAILS**

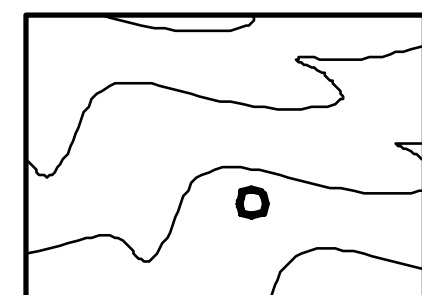


**WING DIHEDRAL NOTE:**

THE ORIGINAL STERLING MUSTANG WAS BUILT WITH NO DIHEDRAL. IF THE BUILDER WISHES TO HAVE THE PLANE FLY WITH BOTH WING TIPS LEVEL, THEN 1" OF DIHEDRAL PER WING PANEL WILL MAKE FOR A BETTER FLYING PLANE. THANK YOU, PAT.

3/8" SQUARE LEADING EDGE  
3/32" X 13/16" SHEETING

1/8" BELLCRANK MOUNT  
(MAKE FROM TWO LAYERS OF LAMINATED 1/16" PLYWOOD)

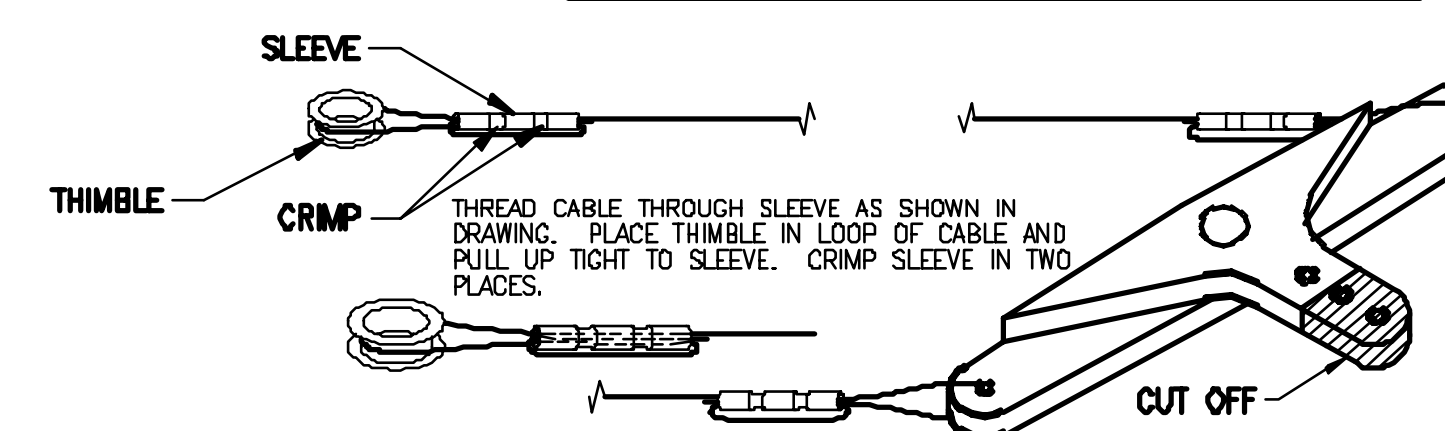


4-40 X 1" BOLTS WITH BLIND NUTS  
(COUNTERSINK WITH 9/64" HOLES  
1/4" DEEP FOR THE BLIND NUTS)

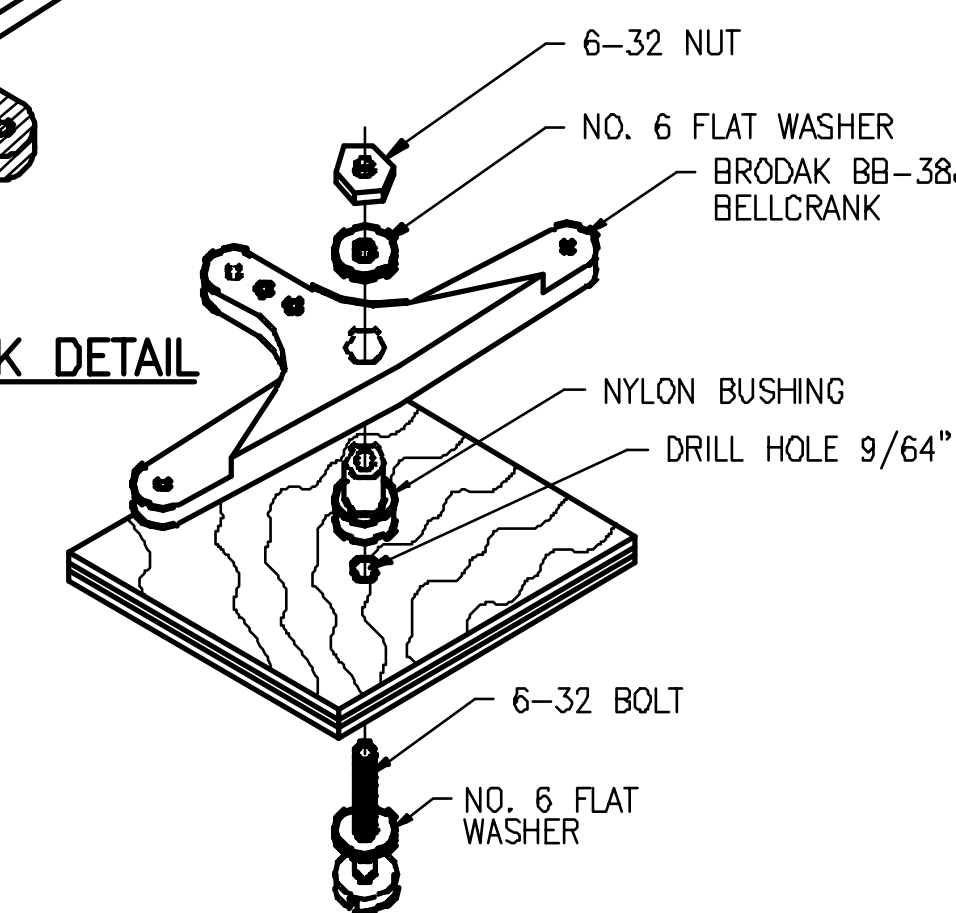


BEND TUBE  
TO CLEAR ENGINE

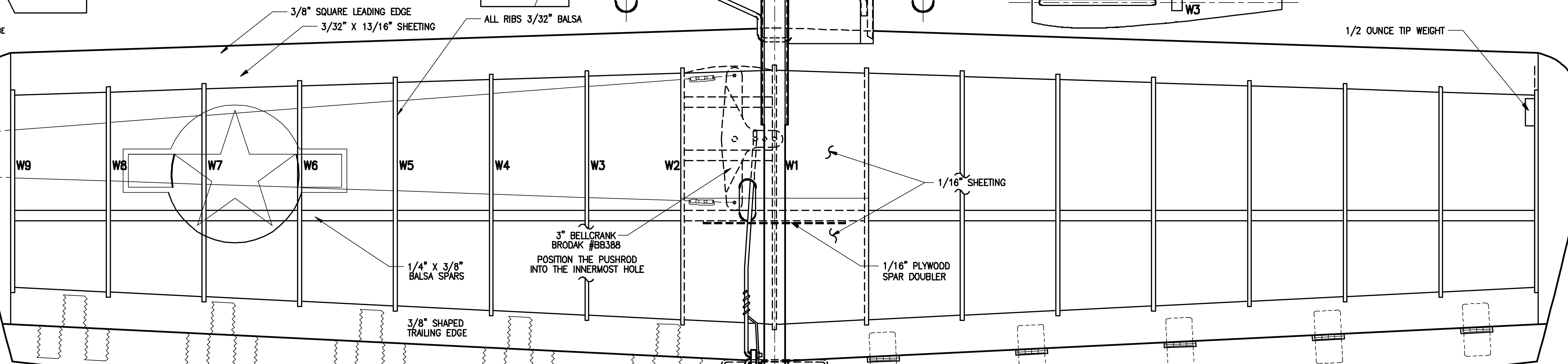
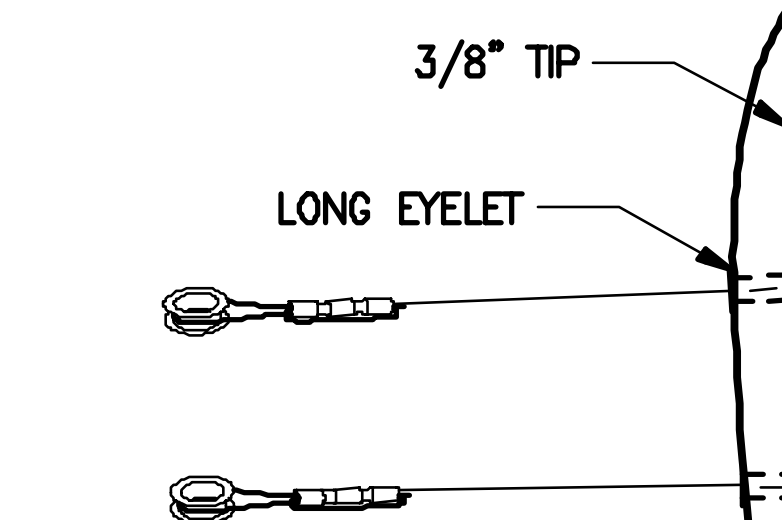
**CONTROL SYSTEM CRIMPING DETAILS**



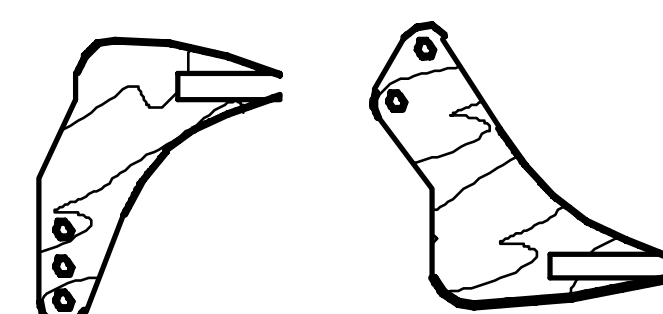
**BELLCRANK DETAIL**



1/2 OUNCE TIP WEIGHT

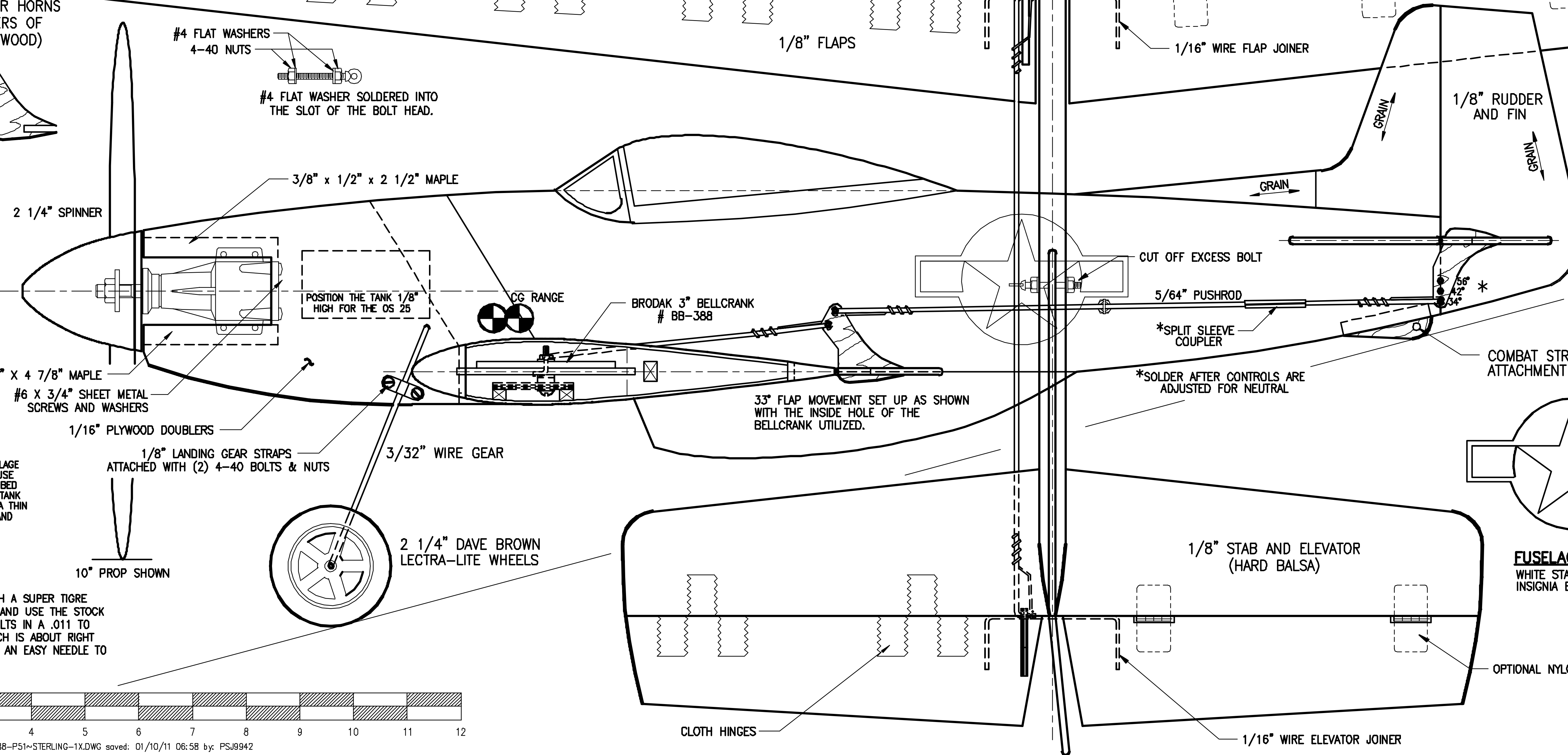


**1/8" FLAP AND ELEVATOR HORNS  
(MAKE FROM TWO LAYERS OF LAMINATED 1/16" PLYWOOD)**



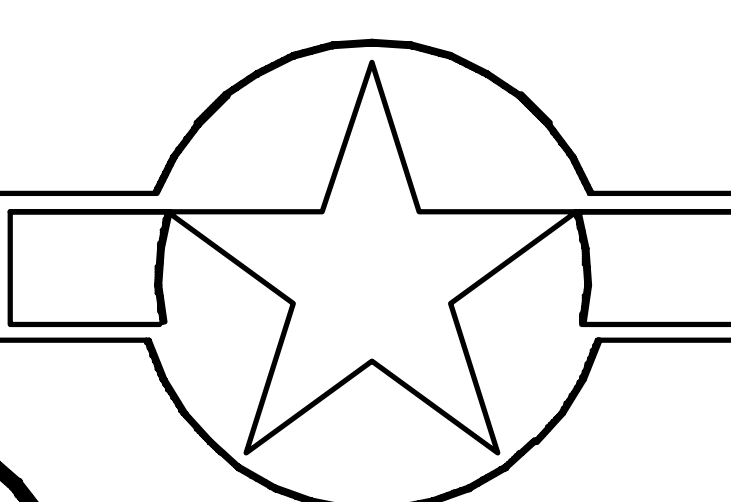
#4 FLAT WASHERS  
4-40 NUTS

#4 FLAT WASHER SOLDERED INTO  
THE SLOT OF THE BOLT HEAD.

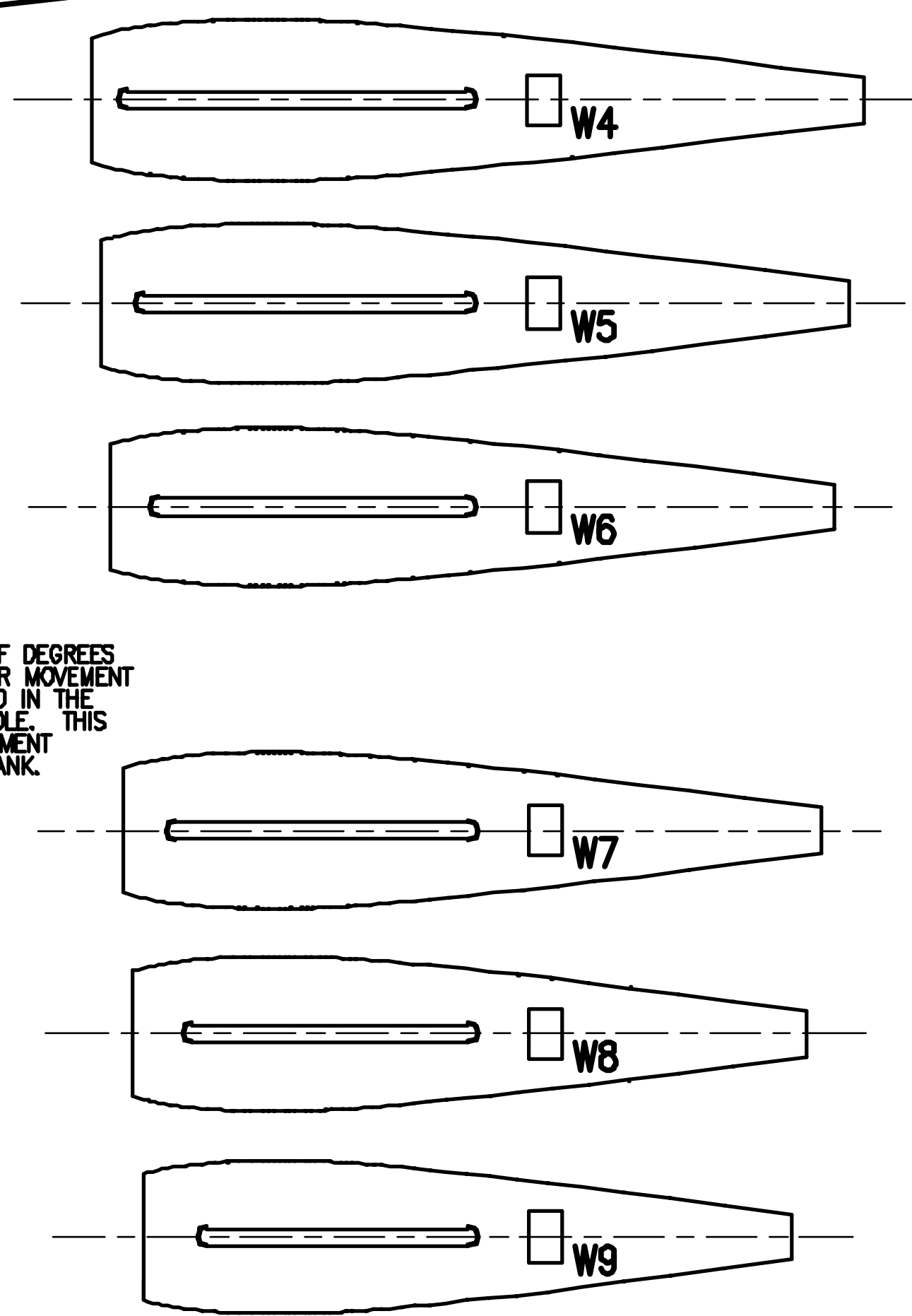


1/8" RUDDER AND FIN  
GRAIN

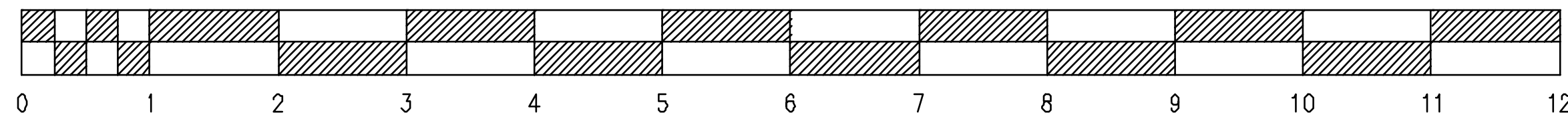
\*THESE ARE THE NUMBER OF DEGREES OF UP AND DOWN ELEVATOR MOVEMENT YIELDED WITH THE PUSHROD IN THE INNER MOST BELLCRANK HOLE. THIS IS BASED ON 45° OF MOVEMENT EACH WAY ON THE BELLCRANK.



**FUSELAGE INSIGNIA:**  
WHITE STARS AND BARS.  
INSIGNIA BLUE SURROUND.



OS25FP/LA SET-UP:  
EITHER REPLACE THE OS NVA WITH A SUPER TIGRE NVA, OR OBTAIN A 230 VENTURI AND USE THE STOCK OS NVA. EITHER WAY, THIS RESULTS IN A .011 TO .012 SQ. INCH CHOKE AREA, WHICH IS ABOUT RIGHT FOR A 25. THIS WILL RESULT IN AN EASY NEEDLE TO SET WITH A GOOD STUNT RUN.



<b>STERLING P-51D</b>	
DESIGNED BY STERLING MODELS	
WING SPAN 38"	WING AREA 319 SQ. IN.
LENGTH 29"	ENGINE SIZE .19-.35
AUTOCAD BY PAT JOHNSTON	KIT CLP-## 2-23-10
13274 W. TAPATIO DR. BOISE, ID 83713	