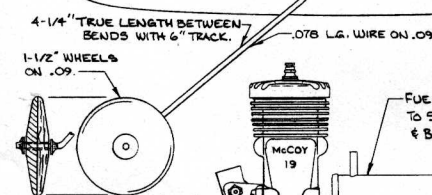
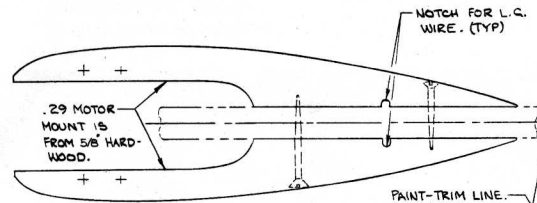
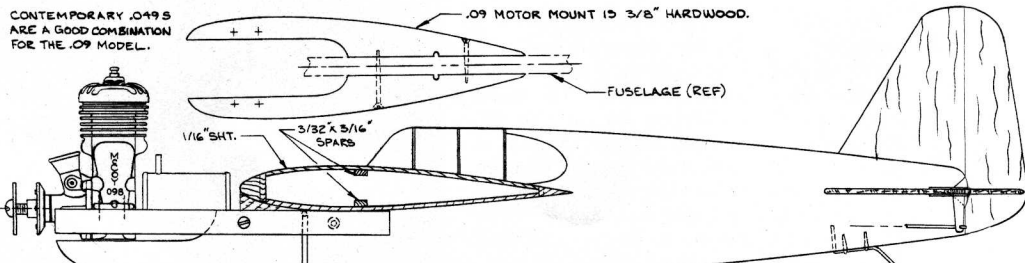
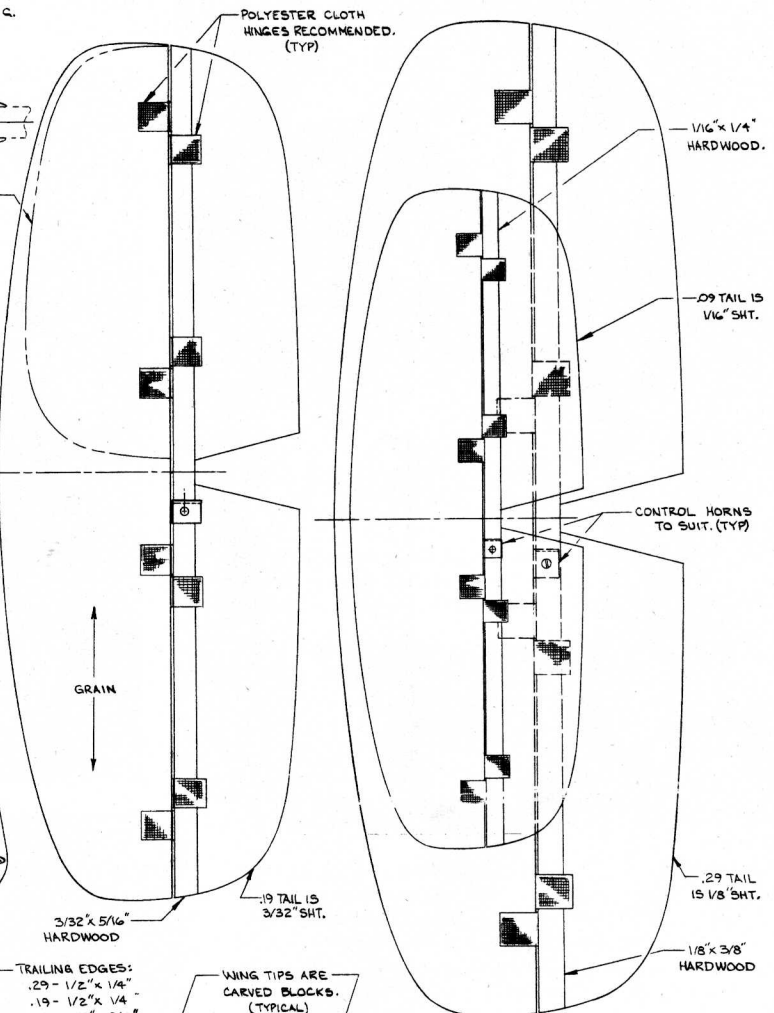
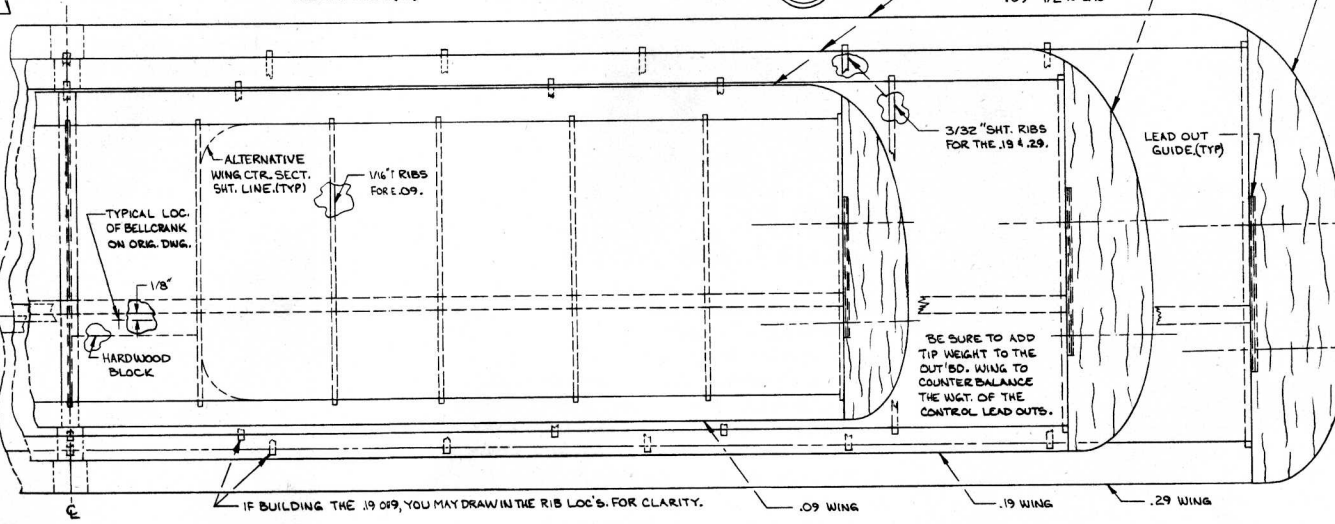
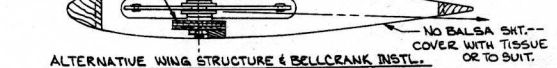
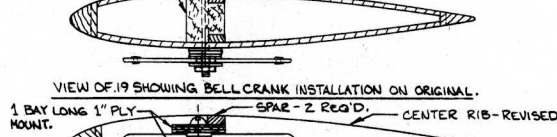
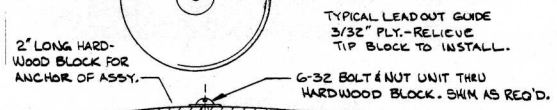
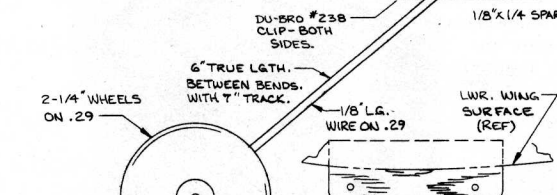
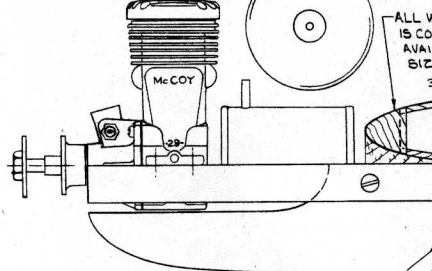
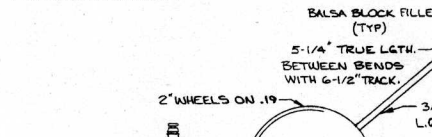
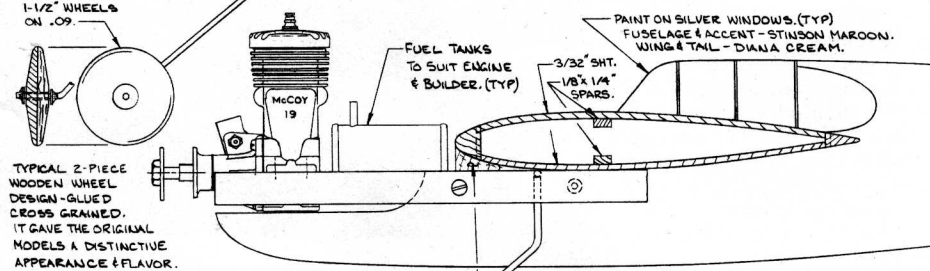


CONTEMPORARY .09S ARE A GOOD COMBINATION FOR THE .09 MODEL.



TYPICAL 2-PIECE WOODEN WHEEL DESIGN - GLUED CROSS GRAINED. IT GAVE THE ORIGINAL MODELS A DISTINCTIVE APPEARANCE & FLAVOR.



TESTORS SOPHOMORE
1951 STUNT TRAINER
ALL THREE SIZES, .09 .19 .29
Wingspans, 24", 30", and 36"
Lengths, 16", 20" and 24"
Original Design by NAT BAST