

SPACE RAY

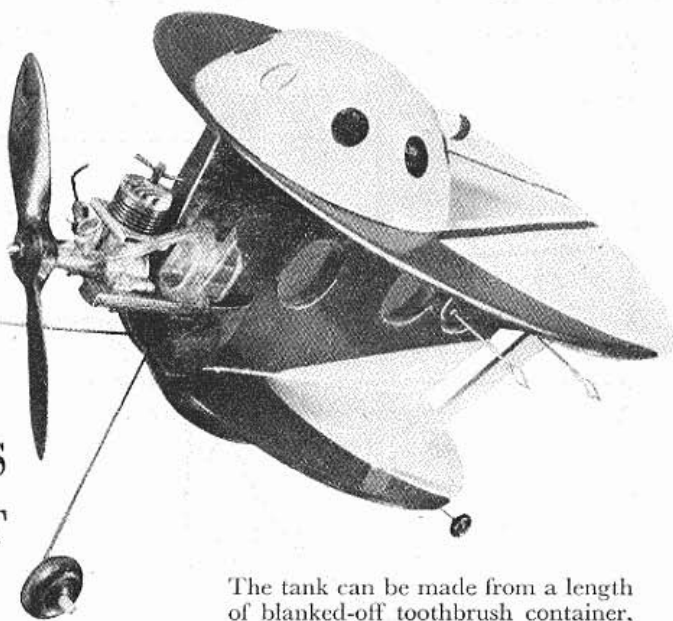
A SPACEMANS RUNABOUT

RAY MALMSTROM'S "out of this world" CIL job for the .75 c.c. range

SEEING this little "out-of-this-world" creation in the air for the first time, the Oldest Member was heard to mutter, "I'll never touch another drop!"

Believe it or not, construction is easy—and quick, and is fully detailed in the sketches below. Pre-cementing of all joining areas is advised. Cover both sides of the basic body frame with soft sheet balsa and round-off all edges. Use coloured cellophane

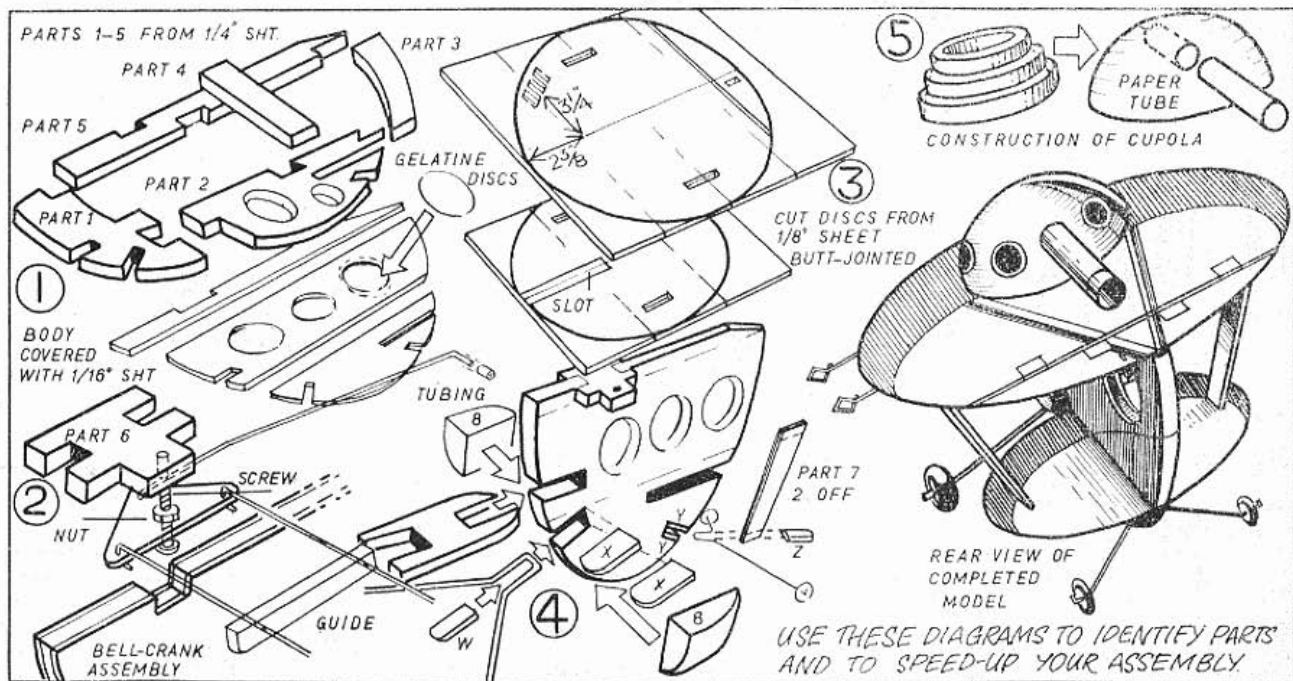
for the windows. Mine came from some old pieces of gelatine from a theatre spot-light. Be careful about locating the lead weight, or piece of old cement tube, according to the position given in the sketch. Hold in place with several layers of doped tissue. Check parts 8 for fitting, sanding if necessary. Ensure both undercarriage units are sandwiched tightly between the ply plates, with locking pieces firmly cemented in.

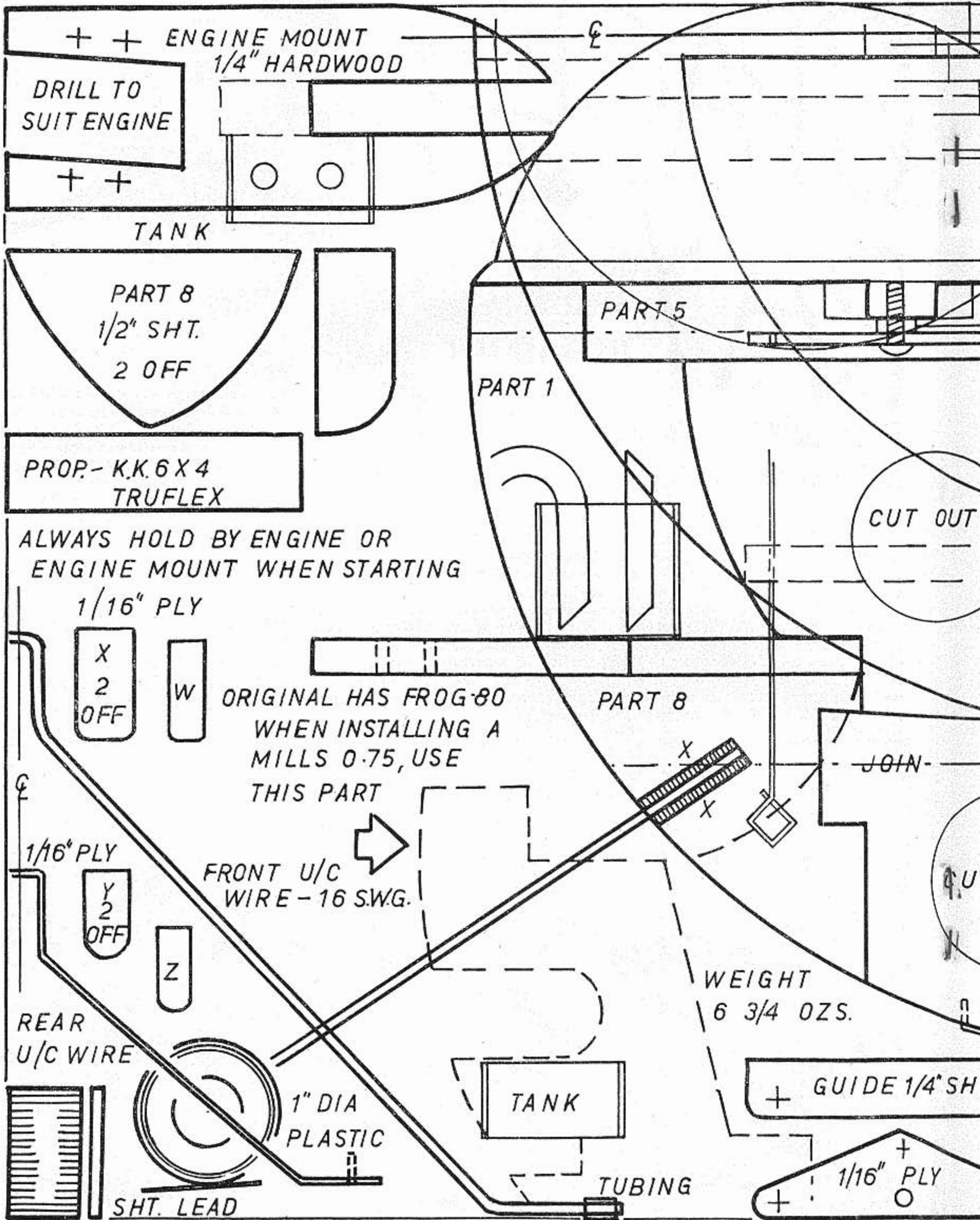


The tank can be made from a length of blanked-off toothbrush container, or sheet-celluloid. Finish entire model with two coats of clear dope, then colour trim, and finally seal with a coat of fuel-proofer.

This little job is happy on lines of approximately 20 ft. Balance point must be on the front lead-out wire. With varying power units, a small amount of ballast may be needed fore or aft. Choose a calm day for first flights—come to the breezy stuff when you are used to the model—believe me she flies well.

FULL SIZE PLANS OVERLEAF





++ ENGINE MOUNT
1/4" HARDWOOD

DRILL TO
SUIT ENGINE

++

TANK

PART 8
1/2" SHT.
2 OFF

PART 5

PART 1

PROP. - K.K. 6 X 4
TRUFLEX

CUT OUT

ALWAYS HOLD BY ENGINE OR
ENGINE MOUNT WHEN STARTING

1/16" PLY

X
2
OFF

W

ORIGINAL HAS FROG-80
WHEN INSTALLING A
MILLS 0.75, USE
THIS PART

PART 8

JOIN

1/16" PLY

Y
2
OFF

Z

FRONT U/C
WIRE - 16 SWG.

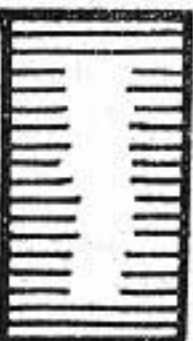
WEIGHT
6 3/4 OZS.

REAR
U/C WIRE

1" DIA
PLASTIC

TANK

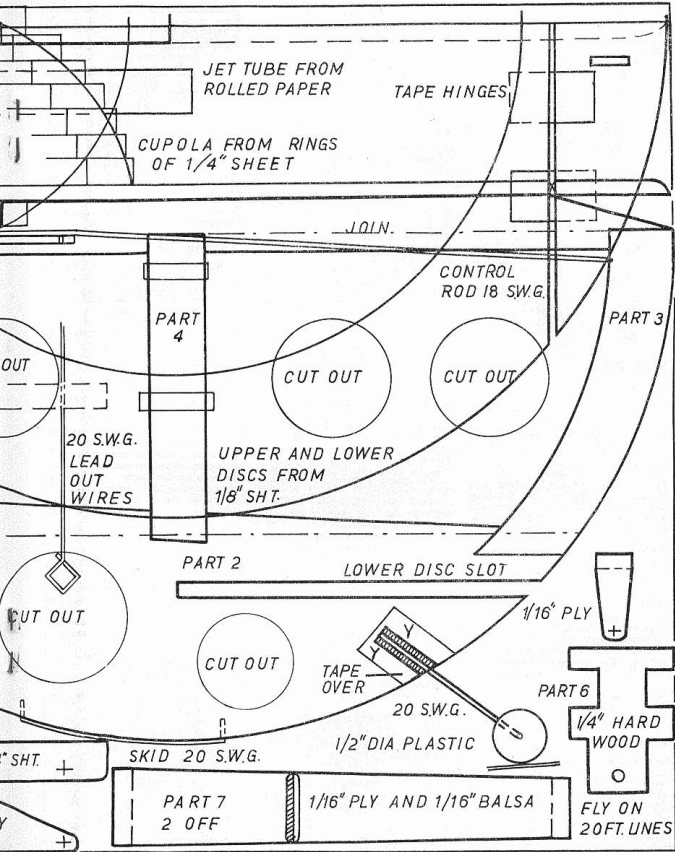
+ GUIDE 1/4" SH



SHT. LEAD

TUBING

+ 1/16" PLY
O



JET TUBE FROM ROLLED PAPER

TAPE HINGES

CUPOLA FROM RINGS OF 1/4" SHEET

JOIN.

CONTROL ROD 18 S.W.G.

PART 4

PART 3

CUT OUT

CUT OUT

OUT

20 S.W.G. LEAD OUT WIRES

UPPER AND LOWER DISCS FROM 1/8" SHT.

PART 2

LOWER DISC SLOT

CUT OUT

1/16" PLY

CUT OUT

TAPE OVER

20 S.W.G.

PART 6

1/4" HARD WOOD

1/2" DIA PLASTIC

" SHT. +

SKID 20 S.W.G.

PART 7
2 OFF

1/16" PLY AND 1/16" Balsa

FLY ON 20 FT. LINES