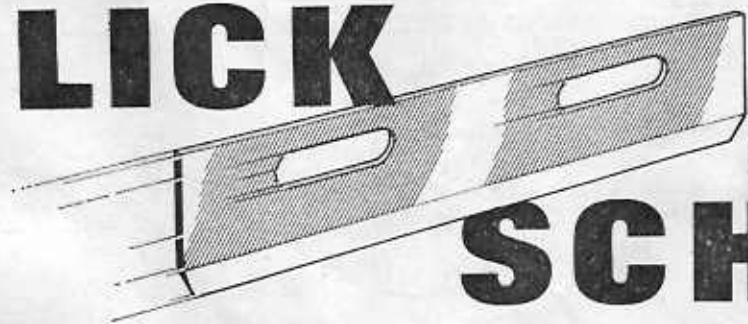


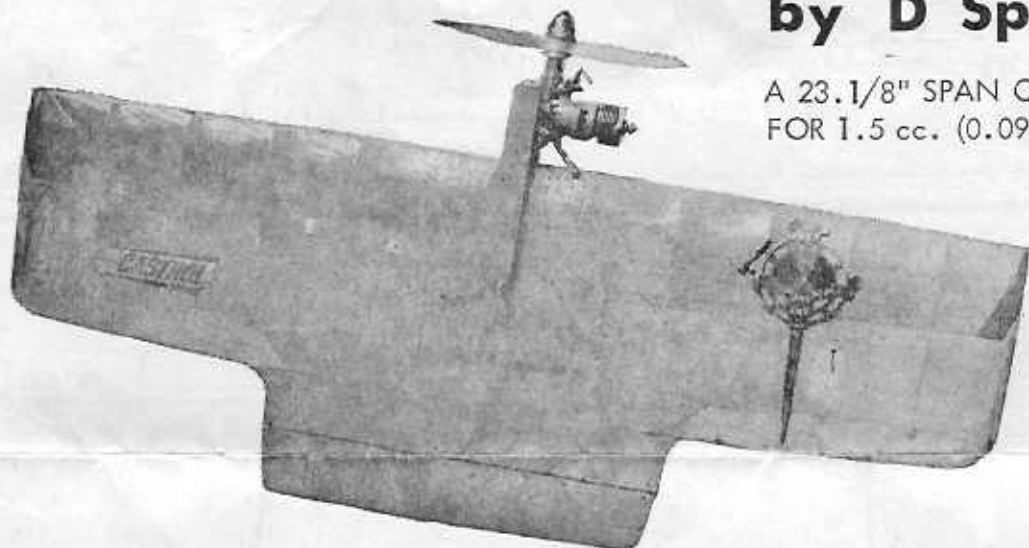
SLICK



SCHICK

by D Sparkes

A 23.1/8" SPAN COMBAT DESIGN
FOR 1.5 cc. (0.09 cu.in.) ENGINES

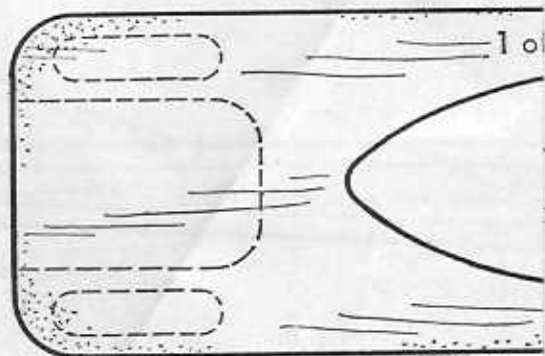


Centre section overlaid
1/2" soft balsa

①

Hollow inside to
clear crankcase
and bolts

Glue and screw engine centre post to the engine bearers. Allow to dry. Shape inside of bearers to fit centre of centre sheeting. Then shape outside of bearers and drill and fit 6 B.A. bolts with the heads soldered with pins to prevent slipping when tightened.

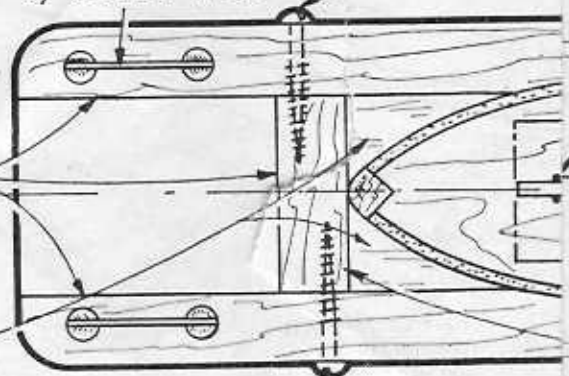


Bolt heads
secured together
by soldered wires

3/4" woodscraper
Stagger as shown

3/8" sq.
hardwood

Scrap 3/8" balsa
packing between
L.E. and spacer.



3/16

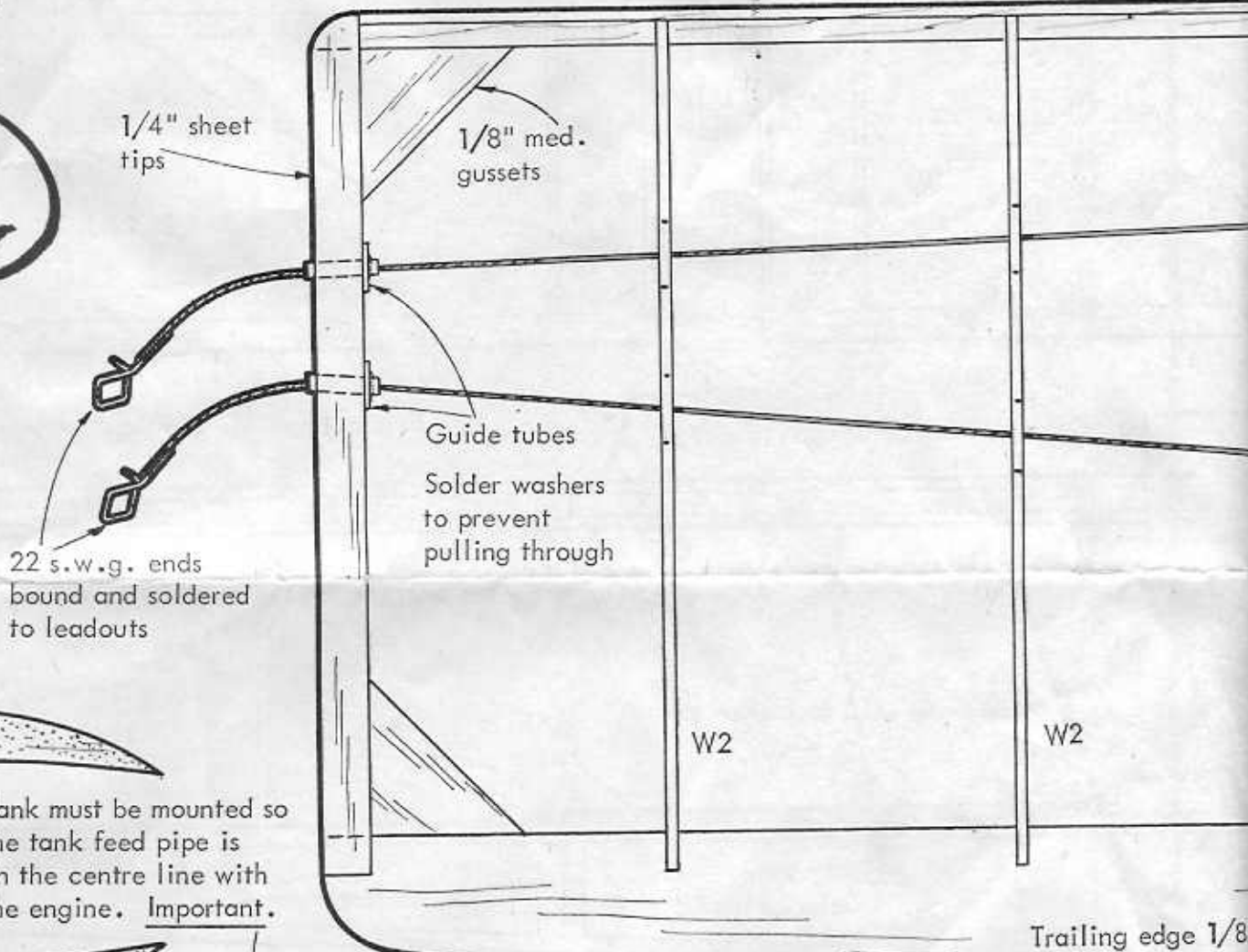
Plan Value

2

Nylon covering is almost essential for combat models. Cover in nylon using dope as an adhesive. When dopping the nylon use 60% dope and 40% thinners. This is to stop warping and to prevent the tip ribs from being pulled inwards. Failure to do this will result in curved tip ribs. If general warps do appear then steam out as required.

Materials required

- 36" 3/16 x 3/16" spruce
- 2 sheets 36 x 3 x 1/16" h
- Scrap 1/4" med. soft she
- Scrap block
- Scrap 1/8" ply
- 12" 3/8 x 3/8" hardwood



Tank must be mounted so the tank feed pipe is on the centre line with the engine. Important.

Tank position in chain lines

Bellcrank. Note arrangement of nuts, washers etc.

Leadout end at bellcrank bound and soldered

Centre section sheeting

Push rod retained with cup washer

18 s.w.g. push rod

Commercial elevator horn

Length of centre spacer varied if necessary - increase overlay width to suit.

or obechi
hard balsa
sheet

- 1 commercial bellcrank
- 1 commercial large stunt tank
- 2 woodscrews
- 4 6 b.a. nuts, bolts, washers
- 1 length 18 s.w.g. piano wire
- 1 commercial elevator horn
- Brass tube (leadouts)



Hollow
to suit
crankcase

1/2" balsa

6 BA nuts and bolts
width to suit engine
Original used a
5.7/8 x 6 Tornac

Wood screw 3/4" long

Commercial 2" x 1/2"
bellcrank

Leadout ends
bound and soldered

Bellcrank
platform
1/8" ply

Heavy
laystrate
leadouts

Balance point

Large
(K.K.)
tubes
with c

1/16"
cove

W1
1/16" ply

W2
1/16" hard
balsa

W1A 1/8" balsa

W1 1/16"

hard balsa

Push rod
hole

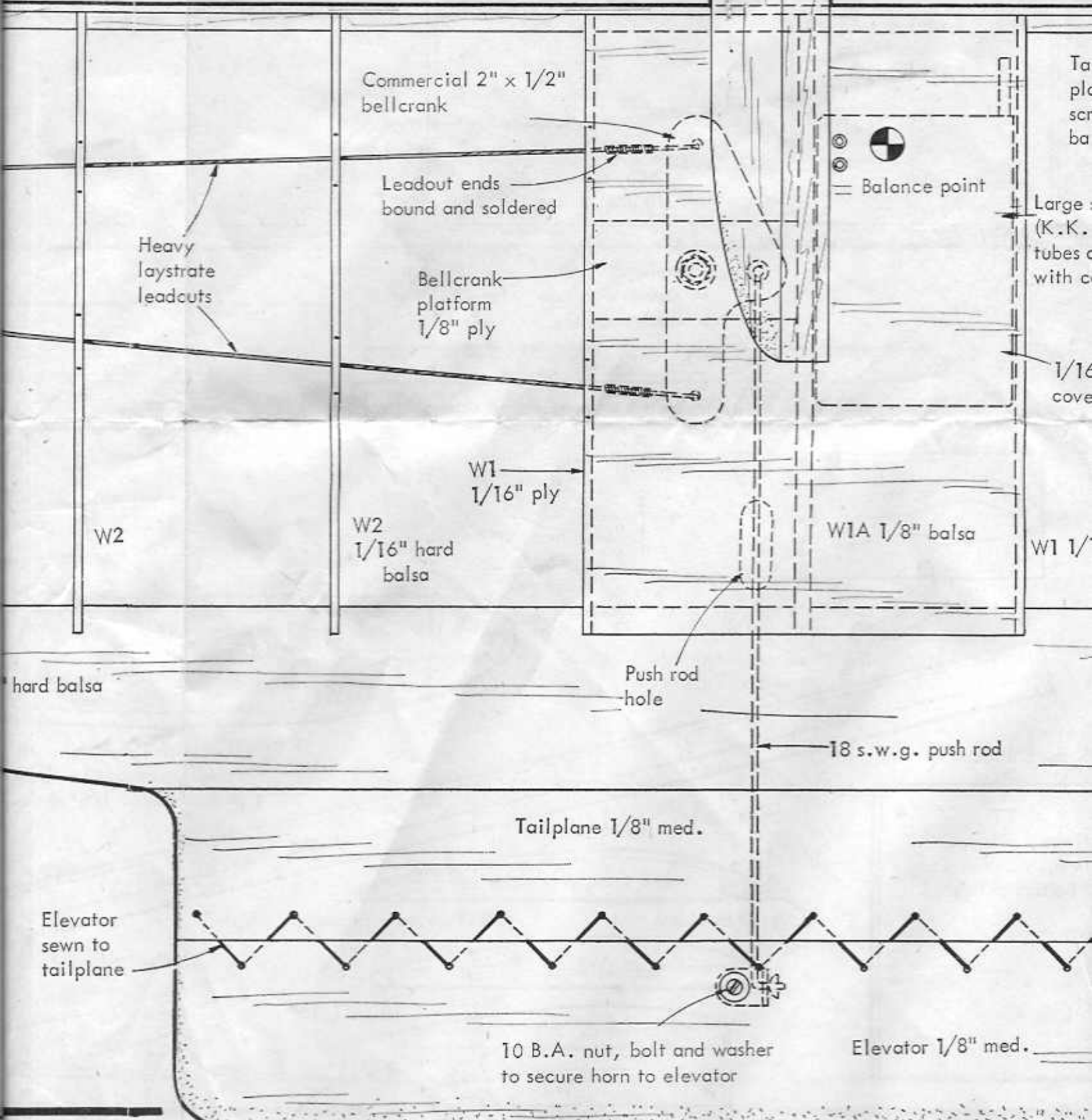
18 s.w.g. push rod

Tailplane 1/8" med.

Elevator
sewn to
tailplane

10 B.A. nut, bolt and washer
to secure horn to elevator

Elevator 1/8" med.



bolts. Arrange
 engine.
 a P.A.W. 1.49
 nado prop.

COPYRIGHT: MODEL AERONAUTICAL PRESS LTD., 13/35 BRIDGE STREET,
 HEMEL HEMPSTEAD, HERTS.

Published in "AEROMODELLER", June 1968



3/16" sq. L.E. (spruce)

Tank held in
 place with
 scrap sheet
 balsa.
 e stunt tank
 K. pressure with
 s desoldered and replaced
 conventional type).

1/2 oz.
 Lead
 weight

Held on
 by nylon
 tape around
 tip.

16" sheet c/s
 covering

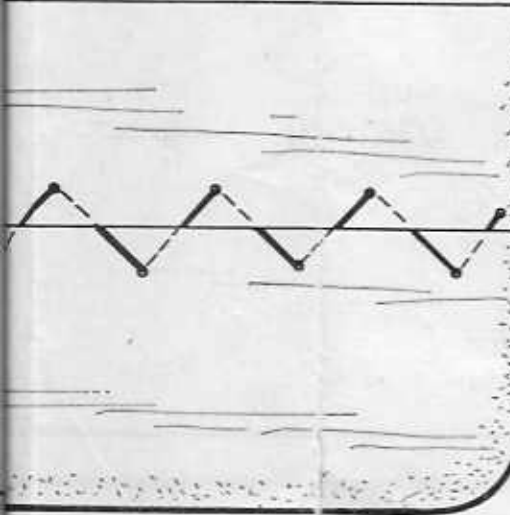
1/16" ply

W2

W2

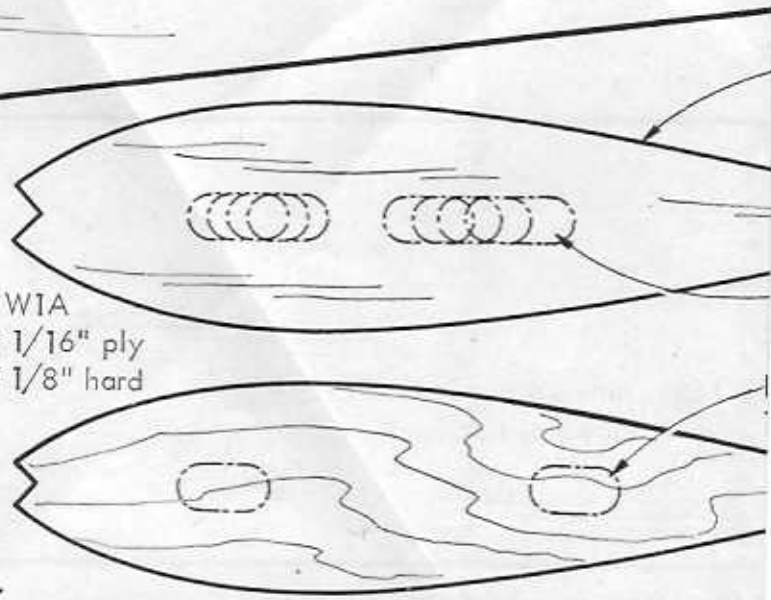
W2

W2



B crank
 platform 1/8" ply.

W1, W1A
 2 off 1/16" ply
 1 off 1/8" hard



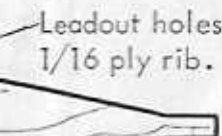
5



W2 and wing tips
8 off 1/16" hard
2 off 1/4" soft



Leadout holes in 4 ribs and one tip.



Leadout holes in one 1/16 ply rib.

CL 968