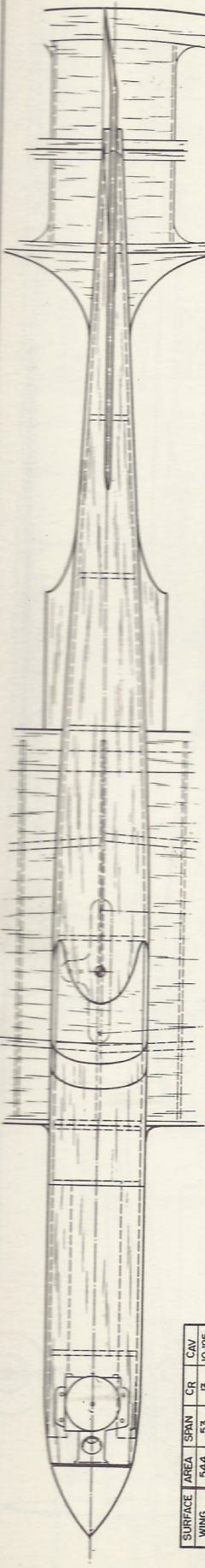


SKYLARK

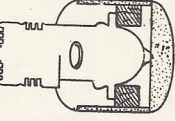
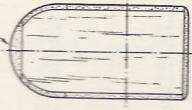


SURFACE	AREA	SPAN	Cr.	CAV.
WING	544	53	13	10/125
FLAP	87	37		
STAB	475	21	2.5	2.3
ELEV.	475	21	3.5	2.3
OVERALL FUSELAGE LENGTH - 37.3"				

TOP BLOCK - 1/4" X 2" X 22"

UPPER SIDES - 1/8" X 1/4" PLANKING

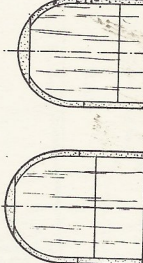
USE NYLON RVC TYPE HINGERS



LANDING GEAR PATTERN - 1/8" DIAM. WIRE

COWL BLOCK - 3/4" X 2-5/8" X 7"

SIDES - 3/32" X 3" X 33" (SITKA SPRUCE)



MOTOR MOUNTS - 7/16" X 1/2" X 6-1/2" (MAPLE)

BOTTOM BLOCK - 5/8" X 2-3/8" X 11-1/4"

30° ELEVATOR TRAVEL

1/16" PLYWOOD

1" WHEEL

3/32" SHEET

SPARS - 1/4" X 1/2"

L.E. - 1/4" SHEET

CEMENT 3/16" SQ. TO RIBS TO BRACE LANDING GEAR MOUNT

APPROXIMATE CG AND BELLCRANK

PLYWOOD

1/8" PLYWOOD

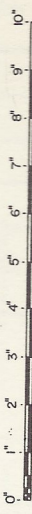
1/4" SHEET TRAILING EDGE

RIBS - 3/32" SHEET

WHEEL SKIRT 040 MAGNESIUM

CUT FUSELAGE FOR WING INSERTION, REINSTALL WITH DOUBLERS AFTER.

NOTE: ALTERNATE TAIL CONSTRUCTION IS 3/16" SHEET



D.J.M.