



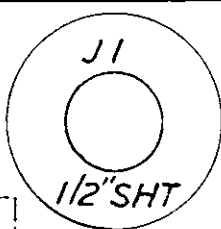
WING 1/4" SHT.

GUIDE LAMINATED 1/16" PLY BETWEEN 1/16" Balsa

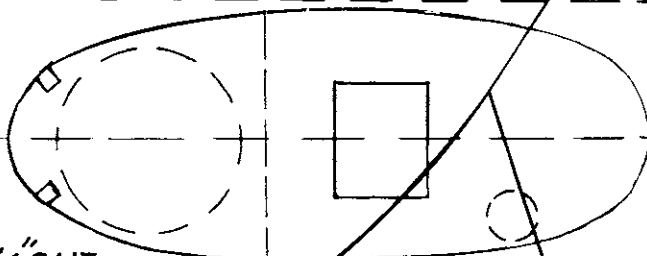


DETAILS

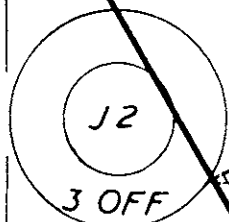
OF REMOVEABLE CABIN



GUIDE



1/4" SHT



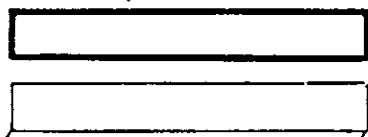
3 OFF

FIN, TAILPLANE 3/32" SHT.

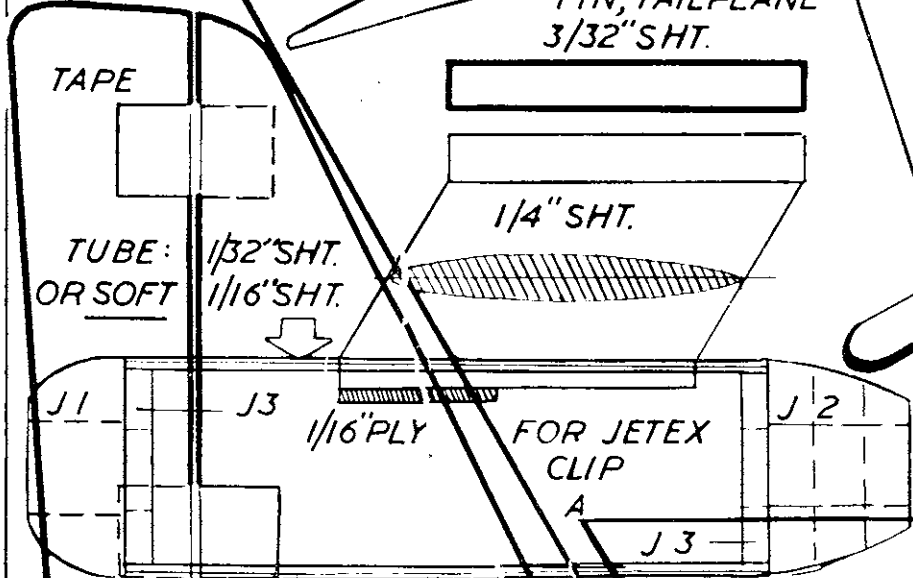
TAPE



TUBE: 1/32" SHT. OR SOFT 1/16" SHT.



1/4" SHT.



J1

J3

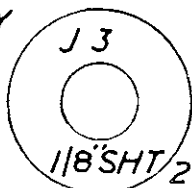
1/16" PLY

FOR JETEX CLIP

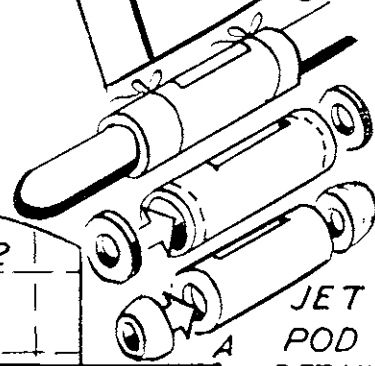
J2

J3

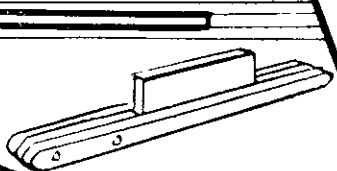
1/16" PLY



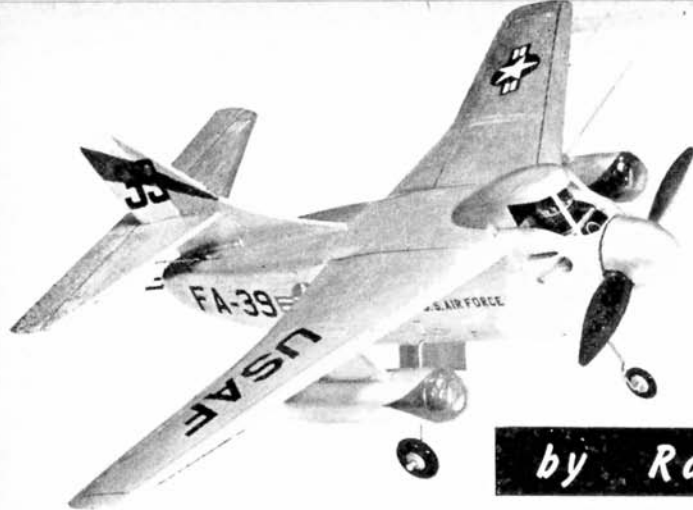
1/8" SHT 2 OFF



JET POD DETAIL



A



SKYVIKING

A simple semi-scale control-liner
for small engines and featuring real

JET-ASSISTED
TAKE-OFF !

by Ray Malmstrom



AMERICAN shipboard attack bombers, with their sleek under-slung jet-pods, have brought a "new look" to the skies of the world. *Skyviking* is a semi-scale model based on one of these swept-wing aircraft—the Douglas A3 D-2 *Skywarrior*. In flight the model's propeller is "lost" and the model has a most realistic jet aircraft appearance. Furthermore, for added flying fun and for real jet-assisted take-off, Jetex 50s or Atom 35s may be fitted in the jet pods.

In order to encourage even the learner in C/L flying to "have a go" at this out-of-the-rut model, construction has been reduced to the "simplest possible" methods. The drawings below, and notes on the plan will supply all building information, and enable you to proceed speedily to that first flight.

Steam or water-moisten fuselage sides and curve correctly. The main undercarriage is bound to rear of $\frac{1}{2}$ ply F2 before assembling to fuselage sides. Note also reinforcing pieces X ($\frac{1}{4} \times \frac{1}{4}$) and Y ($\frac{1}{2} \times \frac{1}{4}$) and their correct positions. The four holes drilled in the lower cowling block are for access to mounting bolts. Drill to suit your engine. Engine should be given approx. 3 deg. right off-set. Tank is a length of tooth-brush container blanked-off and suitably drilled. Check for leaks before cementing in position. Make sure the spigot on the removable cabin is *really* a tight fit in its recess, otherwise you may jettison the cabin in flight. (Yes indeed—we did it!) Round off all edges and sand-in smooth lines between wing junctions and fuselage.

Jet pods can be of 1/32 sheet, or of very soft $\frac{1}{16}$ th. Moisten and form round a broom handle (see plan).

When pods are completed, dope on light-weight tissue. A cut-out in the bottom of the pod will be necessary for access to the Jetex motors if fitted. Dope entire model silver. Original *Skyviking* has red fin and pod flashes and American style transfers. Fuel-proof model, especially engine compartment.

Flying notes: *Skyviking* should balance suspended on a thread tied to a pin pushed into point B on plan. Fly on approx. 20 ft. lines. Take-off (Frog 80 without jets) is rapid. The model is smooth to handle, and landings with the tri-cycle undercarriage are a real pleasure.

