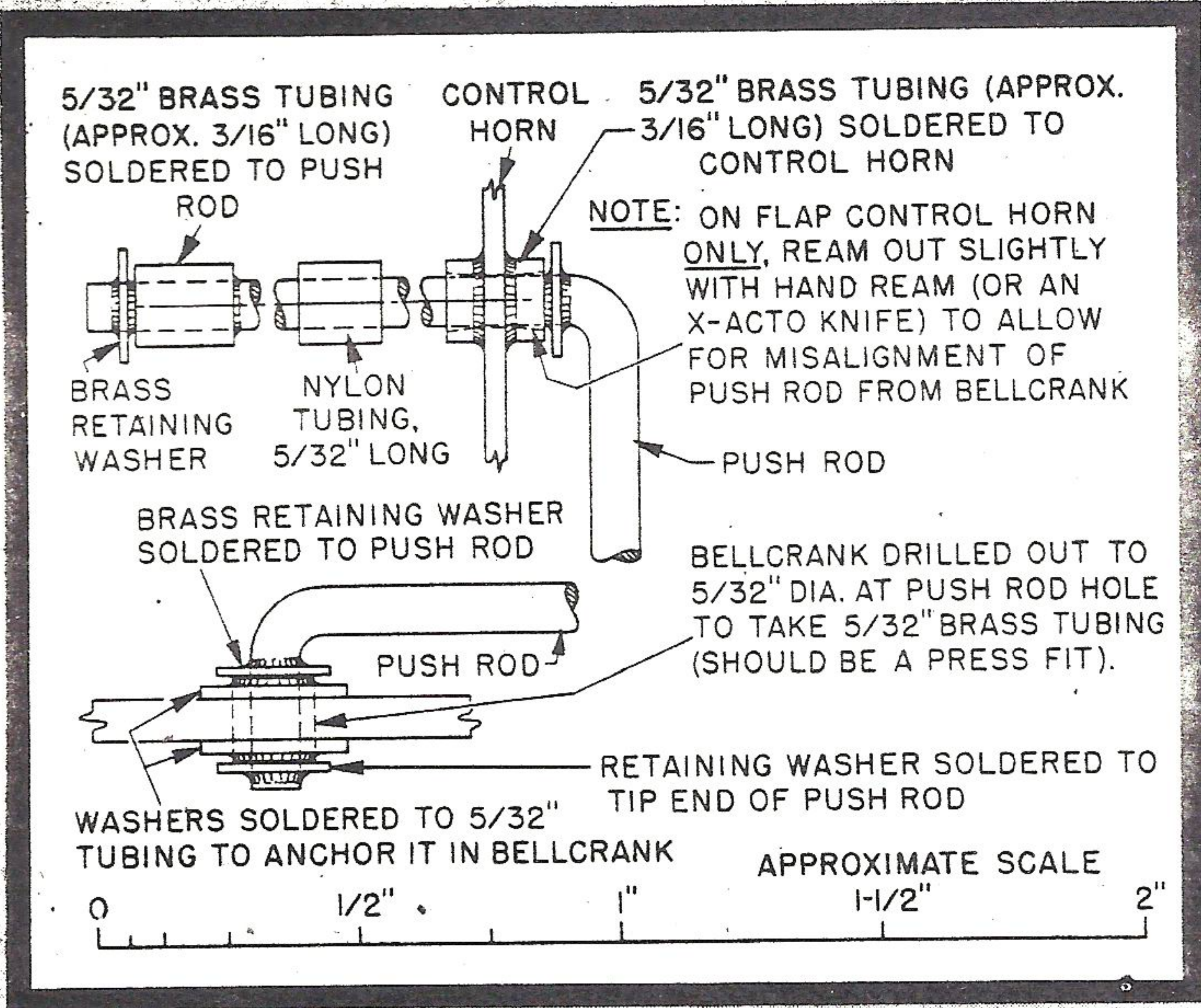


# OLYMPIC MK. VI



Upper detail shows end of push rod and flap control horn. Aside from note on reaming, applies to elevator horn as well. Nylon tubing is "Pylon" brand tank mounting material. All brass tubing standard 5/32" size (O.D.). Generally, this size is 3/32" I.D. right on the button.

## Control Bushing With Nylon When Teflon Is Not Available

Lower detail shows how bellcrank hole is bushed where the push rod passes through it. Large washers soldered to brass tubing, small washers soldered to push rod.

