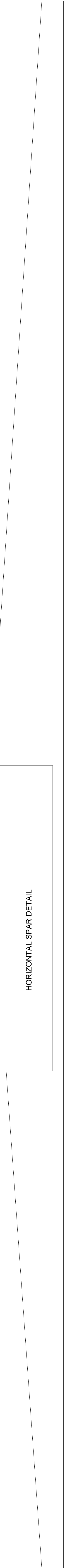


NEMESIS II

1970 NATIONALS OPEN COMBAT WINNER
 DESIGNED JULY 1983 BY HOWARD M. RUSH
 DRAWN FOR AMM BY HOWARD M. RUSH
 WING SPAN 39 in. AREA 339 sq.in.
 ASPECT RATIO 4.49
 ALL MATERIAL Balsa UNLESS
 SPECIFIED OTHERWISE

(C) John H. Culp Drawing by Gary Jones

HORIZONTAL SPAR DETAIL



BUSHING
 3/32" OD BRASS TUBING

90 DEG WHEN STABILATOR IS
 IN NEUTRAL POSITION

STABILATOR
 2/4" LB C-GRAIN
 SHAPE TO 10% THICK AIRFOIL

1/2" Balsa BLOCK
 NOTE THAT GRAIN RUNS VERTICALLY

GRAIN DIRECTION

ENGINE MOUNT ASSEMBLY DETAIL

CONTROL HORN

DUBRO KWIK-LINK

BOOMS
 3/16" BASS

PUSHROD
 1/16" MUSIC WIRE

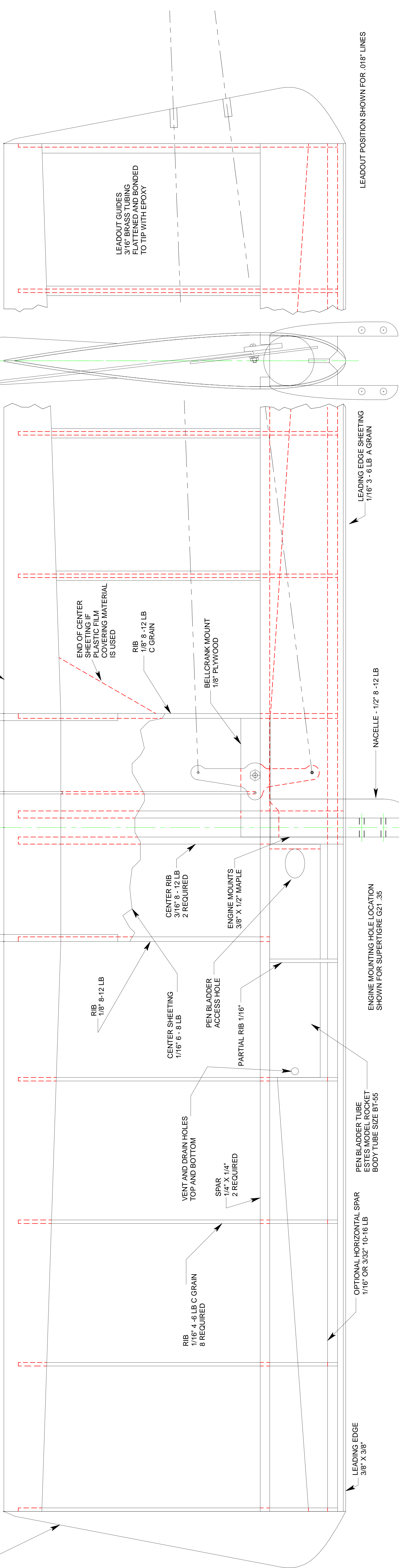
HINGES
 1/16" WIRE

BELLCRANK MOUNT DETAIL

TRAILING EDGE
 1/16" 10-16 LB C GRAIN
 2 REQUIRED

TIP
 4" 8 LB C-GRAIN
 2 REQUIRED

LEADING EDGE SHEETING NOT SHOWN ON THIS SIDE FOR CLARITY



RIB
 1/8" 8-12 LB

CENTER SHEETING
 1/16" 6 - 8 LB

VENT AND DRAIN HOLES
 TOP AND BOTTOM

SPAR
 1/4" X 1/4"
 2 REQUIRED

RIB
 1/8" 4-6 LB C GRAIN
 8 REQUIRED

LEADING EDGE
 3/8" X 3/8"

CENTER RIB
 3/16" 8-12 LB
 2 REQUIRED

PEN BLADDER
 ACCESS HOLE

PARTIAL RIB
 1/16"

PEN BLADDER TUBE
 ESTES MODEL ROCKET
 BODY TUBE SIZE B1-35

OPTIONAL HORIZONTAL SPAR
 1/16" OR 3/32" 10-16 LB

END OF CENTER
 SHEETING IF
 PLASTIC FILM
 COVERING MATERIAL
 IS USED

RIB
 1/8" 8-12 LB
 C GRAIN

BELLCRANK MOUNT
 1/8" PLYWOOD

LEADOUT GUIDES
 3/16" BRASS TUBING
 FLATTENED AND BONDED
 TO TIP WITH EPOXY

LEADING EDGE SHEETING
 1/16" 3 - 6 LB A GRAIN

NACELLE - 1/2" 8-12 LB

ENGINE MOUNTING HOLE LOCATION
 SHOWN FOR SUPERTIGRE G21.35

LEADOUT POSITION SHOWN FOR .018" LINES